

PRODUCTION MAESTRO & PRODUCTION MAESTRO PRO

Quick Start Guide

PRODUCTION MAESTRO PRO

Production Maestro Pro features will be enabled upon connection to a Pro licenced matrix.

Upgrading Production Maestro

If Production Maestro is being installed as an update to an existing Production Maestro installation it is recommended that all the conference configurations are backed up by saving them to configuration files. Production Maestro configurations are saved as .ccr files. These should be placed in a directory outside the directory tree used by the currently installed Production Maestro. They can also be backed up to external media such as CD or DVD.

To export the target Eclipse system configurations from ECS open the target configuration in ECS and open the 'File' menu (ECS 5.2). Select 'Export Project' to open the save dialog and save the system layout as a .ccn file.

Steps to Install Production Maestro

See section concerning upgrading Production Maestro.

Ensure that the installer has full Administrator rights as these are required in order to install Production Maestro.

Production Maestro requires Microsoft Windows XP SP2 / Windows Server 2003 SP1 / Windows Vista / Windows 7.

1. Insert the installation media into the computer's DVD drive. The installation media should autorun and display a menu. Select the Production Maestro installation option from the menu to start the installation. If the installation media does not autorun navigate to the "Production Maestro" folder and select and run the file "setup_productionmaestro.exe" to start the installation manually.
2. Follow the instructions on the screen to install the software.
3. When the installation is complete, a message appears on the screen to verify that the program has been successfully installed on the computer. Click on the 'Finish' button. Production Maestro is now installed on the computer.

If the operating system is Windows XP the built-in firewall may be configured and enabled. If this is the case Production Maestro may need to update the firewall. In this case the following messages may be displayed.

- If the firewall configuration is successful, "Updated XP Firewall" appears in the dialog box.
- If the firewall configuration is not successful a message will be displayed in the dialog box referring the user to more information.
- Windows XP may show a Firewall dialogue box asking whether to Block or Unblock Production Maestro. Select Unblock Production Maestro.

In order to use Production Maestro the ECS configurations should be exported from 'Export Project' as .ccn files which can be read by Production Maestro.

Production Maestro can save conference configurations as files with the default filename extension of .ccr. This filename extension is associated with Production Maestro so that clicking on a .ccr file will automatically start Production Maestro and load the file.

The major elements in Production Maestro operation are shown in Figure 1 below.

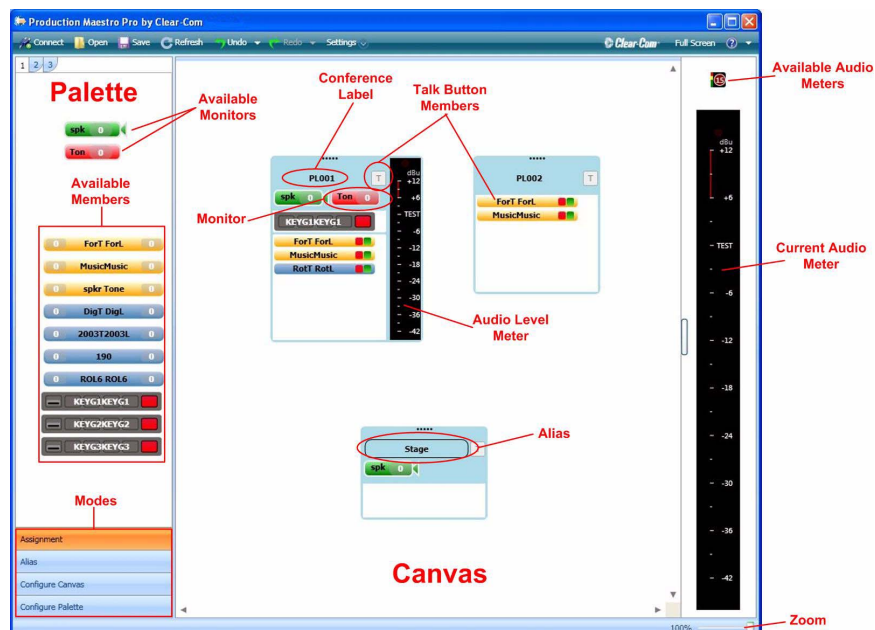


Figure 1: Production Maestro Elements

PRODUCTION MAESTRO & PRODUCTION MAESTRO PRO



Quick Start Guide

PRODUCTION MAESTRO TOOLBAR

The Production Maestro toolbar contains the buttons to control basic Production Maestro operations.

Connect

The 'Connect' button opens a Clear-Com configuration (.ccn) file. The IP addresses of the matrices in the configuration are extracted from the configuration file and connections are made to these matrices. Information on ports and conferences is read from the matrix or matrices by Production Maestro once the connection is made.

PRODUCTION MAESTRO MODES

The Modes area selects the stages in Production Maestro for setting up the palette and canvas and assigning conferences, Fixed 4-Wires, 4-Wire Viewers and Meters. Production Maestro elements are color coded for easy identification; panels are colored blue, 4-Wire ports are amber, conferences ("Party Lines" in ECS) are blue, 4-Wire Viewers and Fixed 4-Wires are light green, Key Groups and are charcoal (Pro mode only), monitor ports are green and idents are red. Audio Meters are black.

Configure Palette

Firstly select 'Configure Palette' from the Modes to display all the devices available for assignment on the canvas. Drag all the devices required onto the palette for later assignment to conferences, 4-Wire Viewers and Fixed 4-Wires using Production Maestro.

Configure Canvas

Then all the conferences that are available on the matrices connected to Production Maestro are displayed on the Configure Canvas palette. The conferences and fixed 4-wires that are to be configured or edited can be dragged onto the canvas area ready to be edited. 4-Wire Viewers can also be created by dragging and dropping the template onto the canvas. Audio meters can be assigned to conferences and 4-wires.

Assignment Palette

If you now drag items from the Assignment palette and drop them into conferences, 4-Wire Viewers and Fixed 4-Wires on the canvas it will make live changes to the matrix network that Production Maestro is connected to.

Alias Palette

You can also create Aliases for conferences by typing the name into the template and dragging the template onto the palette. To alias a conference name drag and drop the required alias onto the conference. To remove an alias from the palette drag it to the wastebasket. The new label will appear on all panel keys with this conference assigned to them in ECS.

LICENSING

Production Maestro is provided with a 31 day initial demo/trial after which a license must be purchased to continue running Production Maestro.

Production Maestro licenses are required for all users multiplied by the number of matrix frames they need to connect to. For further information please contact your Clear-Com sales office.

Production Maestro will check the license on the connected matrix or matrices repeatedly during operation. If the matrix license ceases to be available Production Maestro will disconnect from the matrix.

SUPPORT

You can find support information on the web at <http://www.clearcom.com/>.

The following manuals for Production Maestro and ECS are available in PDF format in the Documentation folder (/ProductionMaestro/Documentation) and on the Clear-Com website.

- Production Maestro Installation and User Manual (part 810410Z)
- Eclipse Configuration System User Manual (part 810299Z)
- Production Maestro Quick Start Guide (part 810409Z)