

Eclipse Quick Start Guide (For Eclipse V5.2)

1 Connect up the Eclipse devices

With the Eclipse matrix unpowered: first connect the rear cards to the user panels, then the interfaces, leaving unused ports to last. Finally, connect the Eclipse to your network (see next item for more details).

You should now have:

- All required cards (e.g. MVX-A16 port cards, E-Que FreeSpeak/Cellcom/E1 or T1 cards, IVC-32 IP Cards, LMC-64 meter cards and E-FIB Fiber front & rear cards) inserted into the matrix frame.
- Panels and interfaces connected to MVX-A16 analogue ports the matrix frame.
- Relevant network connections between the frame and your network.

Now power up the Eclipse matrix.

2 Connecting up the PC

The Eclipse matrix frame is delivered with a default setting to automatically obtain an IP address from a DHCP server on your network, just like when a laptop is connected to a home router.

If no DHCP server can be located, the matrix frame will default to the IP address of 169.254.0.100. This will allow a PC that is also set to automatically acquire an IP address to communicate with the matrix frame through a directly connected Ethernet cable. (Note – if you are using an older PC you may require an Ethernet crossover cable to do this. If the Ethernet port status and activity LEDs are not lit when the PC and frame are powered and the cable is connected, the cable is probably of the wrong type).

You can connect the matrix frame (Eclipse-Median, Eclipse-Omega or Eclipse-PiCo) by either connecting the frame to a network with a DHCP server or by connecting directly to the frame's LAN port (1) with a single cable to the Eclipse's management PC LAN port.

3 Hardware Check

The matrix frame is delivered with a factory-set configuration that allows you to verify the correct functioning of the MVX cards, associated analog connected panels and central processing cards.

If you haven't done so already, plug any panels into the desired ports of the purchased MVX cards and power the panel(s).

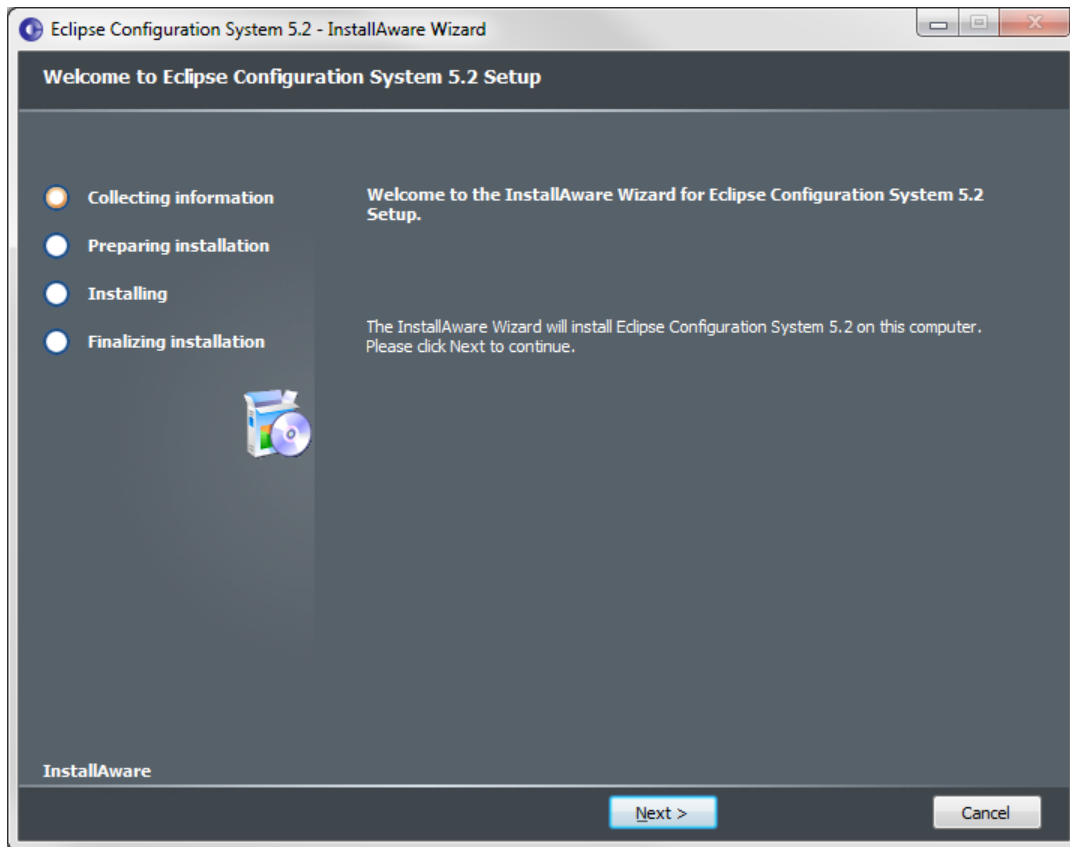
On each panel a talk key is provided to itself. Also a talk key and a listen key are provided to a Party Line, (also known as a Conference or Loop) label: PL001.

This rudimentary configuration allows the panel's port number to be identified and the correct functioning of the MVX cards and panels to be verified without the need to install any software or configuration.

4 ECS (PC Software) Installation

Insert the ECS installation DVD and follow the instructions provided. Separate ECS client and server installs are provided from the install DVD. (Only select the server installation if you wish run multiple clients pointing to a shared central configuration server. This requires an installation passcode.)

When this installation is complete run the ECS management application



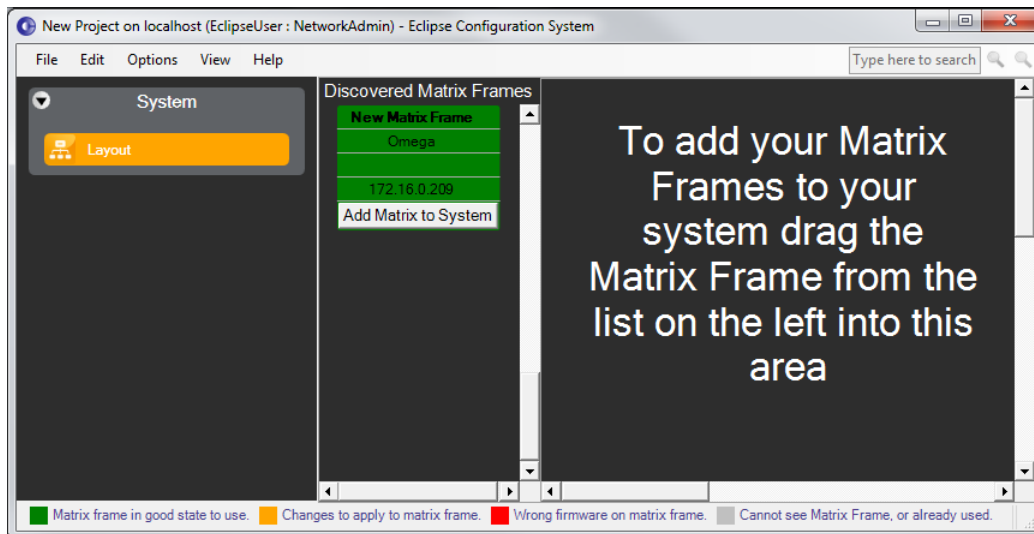
5 Discover your Hardware (Frame, Cards and Ports)

Connect your ECS PC to the same LAN (or direct Ethernet cable, see above) that your matrix frame is also connected to.

Run ECS. You will be prompted for a project name. An ECS project holds the configurations that can be applied to one or more matrix frames. **Name your project.**

If your matrix frame is not yet powered, **power it now**.

Your matrix frame will now be seen on the Layout screen, in the discovery pane.



Drag the frame to the canvas on the right as instructed

- a) Bring this frame into your project.
- b) Discover the cards in your frame.
- c) Discover the analogue panels and interfaces attached to your MVX cards.

You now have a base configuration where you can a) name your ports, b) create Party lines, fixed groups and other intercom functions etc, c) assign keys to your intercom panels. Links to the associated help pages are provided on the screens to assist you in doing this.

6 Configuring the Matrix Frame – Step 1: IP address

In Eclipse V5.2, the default setting for the Eclipse is to automatically acquire an IP address from the network; however it is strongly recommended that you set a static IP address before commencing normal operations. The primary reason for this is that automatically acquiring an IP address will considerably delay restarting the Eclipse while a new IP address is acquired. Additionally, it should be noted that allowing the Eclipse to automatically acquire an IP address may result in the address shifting during operation, which is not desirable.

Set a static IP address on the matrix frame by right clicking the matrix frame on the system screen right hand canvas and select the 'Change IP Address' option. This will display the current setting on the frame. Select the edit option and make any desired adjustment. You may need to contact the IT department for help with this item.

Commit the change by selecting the apply button. This will reset the matrix frame and apply the change.

7 Configuring the Matrix Frame – Step 2: Configuration Download

The matrix frame will currently be in the amber state as displayed in the Project screen. As indicated by the key at the foot of this screen, this indicates that live configuration of the project for this matrix frame needs to be applied to the matrix frame.

You can adjust the name and/or description the configuration of a matrix frame using the configuration manager button on the matrix frame on the system screen. This is not mandatory, but advised.

Apply the configuration to the matrix frame by selecting the Apply Reset all frames button on the ECS toolbar (or selecting ctrl + D).

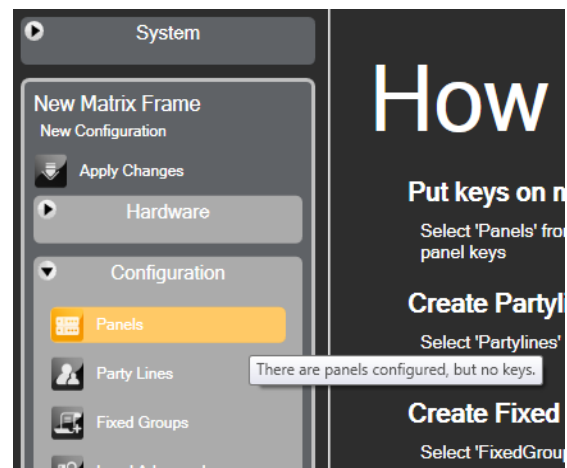
When the configuration is downloaded, the matrix frame will reset. When the matrix reset is complete it will reappear on the network and will now be shown as green on the system screen - i.e. your Omega/Median/Pico is now configured from this project.

8 Configuring the Matrix Frame – Step 3: Configure your features

On the left hand side bar of the Eclipse Configuration Software a number of configuration option are provided based on the cards and panels fitted to you discovered frame.

ECS will illuminate certain features in the left hand side bar if a mandatory step of the configuration is yet to be performed (based on your hardware). **To find out what the step is roll the mouse cursor over the amber option and a tool tip will be provided.** If you have multiple matrix frames in your system a summary total of these indications is given on any unselected matrix frame in the sidebar.

Additions and adjustments to your System can be applied to the matrix frame by selecting the 'Apply Changes' option from the ECS side bar.



Use the help links provided on the Configuration tab to assist you in selecting the required features for your system.

This information will help you

- Create intercom features e.g. Party Lines, Fixed Groups, IFBs etc.
- Give access to these to your users via Panel Keys, Routes, Controls etc.

Further information can be found on the on-line help in ECS or the ECS v5.2 manual.