

Key Features:

The Logic Maestro Programming application for ECS provides:

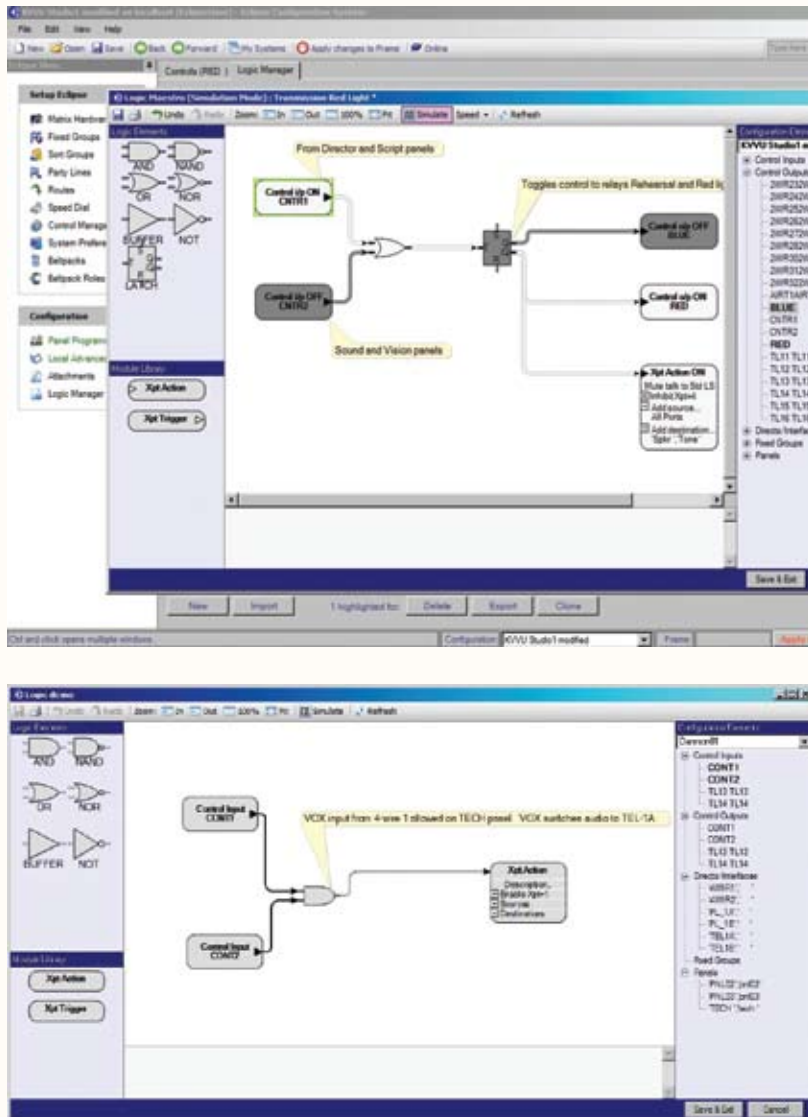
- Similar element names as ECS configuration elements such as matrix frame and Interface GPI inputs, Interface GPI Outputs, Panel GPIs, Crosspoints, Routes and ECS virtual controls and speed-dials, Fixed Groups, Ports (including the special cases of Global IFB) and VOX enabled GPIs
- Logic combinational elements such as "AND", "OR", "NAND", "NOR" and "NOT" can be used to link controls together to form gated combinational logic from input to output
- Modules for crosspoint triggering of controls or for crosspoint action with controls
- Import and Export of logic diagrams between configurations and users
- Outputs a script that can be used with V5.x maps to control logic between the entities described above
- An off-line display to show what the control logic will do once inserted within the configuration
- A print-out of the logic diagram to help installation
- User annotation as reminders about the logic
- Reports programming errors to the screen

In the everyday running of a communications system between many users working on a single or multiple projects, there is often the need to link the intercom to other systems, like signal lights or door control, or change the routing depending on external states such as microphones being live. Such conditional intercom has been programmed in software using Control Macros scripts within the Eclipse Configuration Software (ECS) system until now.

Logic Maestro augments the current text scripted Control Macros with a simple and graphical logic programming tool within ECS, enabling significantly easier programming of powerful intercom control functions.

The Logic Maestro application is enabled by a one time passcode to provide greater logical functionality within the ECS, to enable for example:

- Transmission inhibit of intercom to studios when the audio console has the microphones live to air
- Transmission inhibit of audio tone and video bar signals when the studio is not in rehearsal
- Disabling routes between certain panel users under control by technical positions
- Enabling production conferences between many users under one button
- Toggling cue lights from a number of panels with indication of the cue status
- Telephone line handling
- Switching destination crosspoints behind simple generic labels when assigning the intercom to another studio floor



Operation

The Logic Maestro application is accessed through the sidebar menu within ECS. It automatically picks up all the relevant controls, relays, GPIs, VOXs, Fixed Group labels etc from the working configuration. The user need only to drag and drop the Control Inputs to connect with logic gates to Control Outputs or Crosspoints in order to assemble a graphically intuitive logical diagram.

The logic flow diagram can be exercised to review what will happen when the controls are active singly or in combination.

Saving the diagram and ticking it for inclusion in the current configuration is all that is needed to provide sophisticated controls within your intercom network.

The logical diagram can be printed out to help in tracing the physical connections in the installation and can be exported to other configurations or to other user groups.

Logic Maestro provides the power to supercharge your intercom to provide tailored control for real world applications.

System Requirements

Logic Maestro (as part of ECS) requires the following system configuration:

- Microsoft Windows XP Professional SP3 or Windows Server 2003 SP1 (SP2 recommended) or Windows Vista SP1 operating system
- Appropriate language support if non-Latin fonts are to be used
- Microsoft SQL Server Express 2005 service pack 3 (supplied with ECS)
- Microsoft Internet Explorer 6 (supplied with ECS)
- Macromedia Flash Player 9 (supplied with ECS)
- Microsoft .NET Framework 3.5 SP1 (supplied with ECS)
- Personal computer with Pentium III 600 MHz or higher processor
- 1GB RAM
- 1 GB of free hard disk space
- DVD-ROM drive
- SVGA display resolution
- Mouse or other pointing device
- Appropriate keyboard if non-Latin fonts are to be used
- One serial port or USB port and USB to serial adaptor
- IEEE 802.3 Ethernet card

www.clearcom.com