


EHX Configuration Software

Eclipse HX Digital Matrix Solutions



Linking
People
Together

Key Features and Benefits

- Online and offline configuration changes
- Non-intrusive configuration downloads allow system changes without disruption
- Client/Server operation enables multiple administrators to configure the system
- Central configuration of a single Eclipse HX matrix or a complete network of intelligently linked Eclipse HX matrices
- 4 levels of secure system management access: Guest, User, Local, Admin
- Logic Programming for conditional changes to intercom operation
- Remote monitoring supervision of intercom panels and FreeSpeak beltpacks
- Comprehensive range of communication modes: IFB, Group, Conference, ISO, etc.
- System health monitoring and diagnostic logging, live telemetry display from FreeSpeak beltpacks and transceivers
- Centralized configuration of beltpack roles
- Secure access for IP connected Agent-IC and Station-IC mobile clients
- Integrated with Dynam-EC for online assignment
- Configuration of multi-function operator panels with multiple shift pages, interlocked keys, Reply keys, etc.

EHX™ configuration software provides administrators and operators with an easy and intuitive means to configure an entire Eclipse® HX network.

Configuring Eclipse HX Systems with EHX Software

The Windows-based EHX configuration software configures and controls the operation of one or more Eclipse HX matrices. EHX can both download and upload system configurations to a target Eclipse HX matrix for either offline editing or live changes.

System Configurations

Up to four complete system configurations can be stored in the CPU card of the Eclipse HX-Delta Lite, -Delta, -Median, or -Omega frames. These configurations can be retrieved and activated on the matrix when required.

The Windows PC that hosts the EHX application stores complete system configurations for both offline editing and for download to the matrix. Storage of system configurations is only limited by the amount of available memory space on the PC. You can download the configurations to the matrix as required.

When running EHX on Windows operating systems, the client and server can run on separate machines connected over a network. You can use EHX to perform a wide range of configuration tasks, including:

- Assigning labels (names) to ports and user panels
- Creating point-to-point and fixed group (partyline) communications between connected audio devices
- Enabling, limiting or disabling features of any connected user panel or card
- Configuring connections between matrices

Current Version

EHX version 12.1 includes support for the Station-IC™ Virtual Desktop Client, managed through the E-IPA-HX card. With EHX v12.1, the E-IPA now has an E1 mode which allows the user to switch between IP connection or E1 modes (used for FreeSpeak II® non-IP transceivers). EHX v12.1 adds the ability to scan the 5 GHz frequency (via a connected Edge transceiver) and display the results in EHX, to aid FreeSpeak Edge™ set up.

EHX Configuration Software

Eclipse HX Digital Matrix Solutions

Technical Specifications

Recommended PC Requirements for Hosting EHX

Operating Systems

- Windows 10
- Windows Server 2019
- Windows Server 2016

Memory

- 8GB for standard systems
- 16MB for large networked systems, servers, and heavily used Dynam-EC™ clients

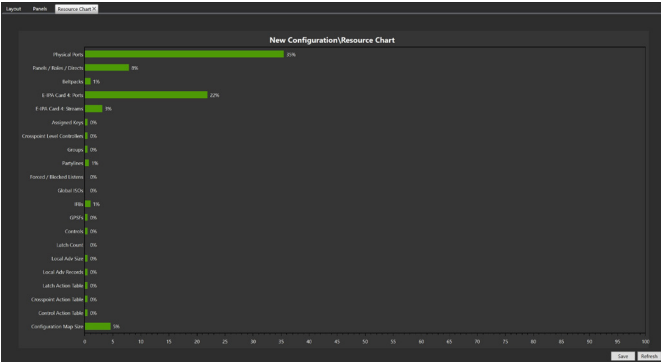
CPU

Intel i7 10th generation or equivalent

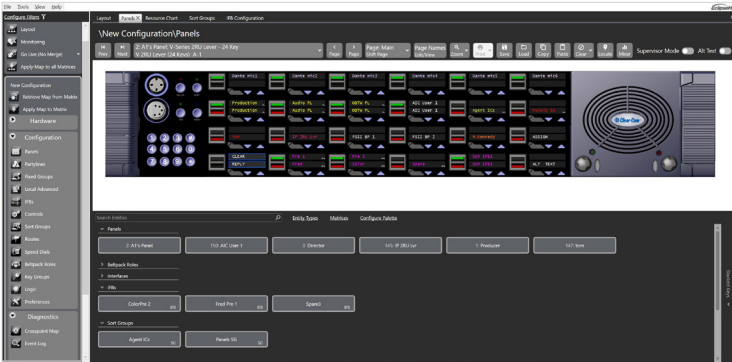
GPU

Dedicated GPU for large network systems

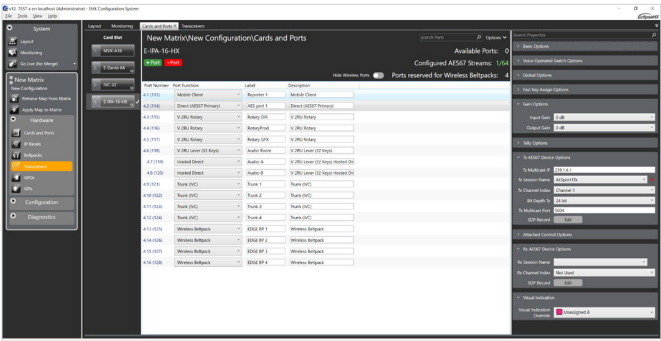
EHX Configuration Software



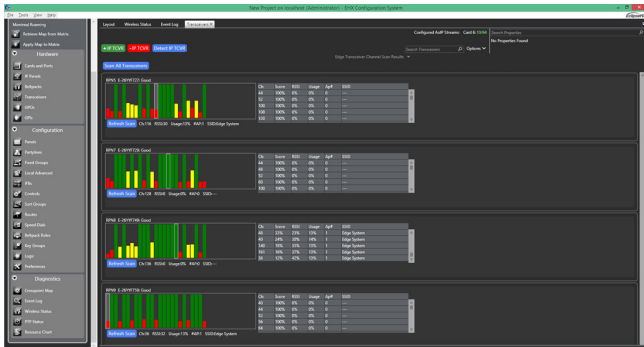
Resources



Panels



Cards and Ports



5 GHz RF Scanning



www.clearcom.com
© Clear-Com and the Clear-Com logo are registered trademarks of HM Electronics, Inc. Copyright © 2021. Clear-Com, LLC. All rights reserved.

Notice About Specifications | While Clear-Com makes every attempt to maintain the accuracy of the information contained in its documentation, that information is subject to change without notice. Performance specifications included in this document are design-center specifications and are included for customer guidance and to facilitate system installation. Actual operating performance may vary.

WARNING: Cancer and Reproductive Harm - www.P65Warnings.CA.gov