

Key Features and Benefits

- Online and offline configuration changes
- Non-intrusive configuration downloads allow system changes without disruption
- Client/Server operation enables multiple administrators to configure the system
- Central configuration of any Trilogy host or a complete network of intelligently linked Trilogy matrices
- Access management console with multi-role and administrator configuration
- GPIO logic programming for conditional changes to intercom operation
- Host remote monitoring capabilities providing system status for all connected hosts
- Comprehensive range of communication modes: IFB, Group, Conference, SIP, etc.
- Easy to use structured layout
- Centralized configuration of all connected software and hardware operator panels
- Secure access for IP connected virtual panels Windows/iOS/Android
- Configuration of multi-function operator panels with multiple shift pages, interlocked keys, quick response keys, etc.



Gateway™ Configuration Software provides administrators and operators with an easy and intuitive means to configure an entire Trilogy network.

Configuring Gemini and Mercury systems with Gateway Configuration Software

The Windows-based Gateway configuration software configures and controls the operation of one or more Trilogy matrices. Gateway can both download and upload system configurations to a target Trilogy matrix for either offline editing or live changes.

System Configurations

Up to four complete system configurations can be stored in the Gemini and Mercury frames. These configurations can be retrieved and activated on the matrix when required.

The Windows PC that hosts the Gateway software stores complete system configurations for both offline editing and for download to the matrix. Storage of system configurations is only limited by the amount of available memory space on the PC. You can download the configurations to the matrix as required.

When running the Gateway configuration software on Windows operating systems, the client and server can run on separate machines connected over a network. You can use Gateway to perform a wide range of configuration tasks, including:

- Assigning labels (names) to ports and user panels
- Creating point-to-point and fixed group (Conference) communications between connected audio devices
- Enabling, limiting or disabling features of any connected user panel or option card
- Configuring connections between matrices

Current Version

Gateway V5 includes support for the latest 700-25-06 Mercury Interface Unit and Clear-Com V-series Iris™ 32 and 12-lever key panels. G.722 codec support for virtual panels in addition to existing G.711a/u codecs and newly enhanced SIP capabilities.

Technical Specifications

Recommended PC Requirements for Hosting Gateway

Operating Systems

Windows 10

Windows Server 2019

Windows Server 2016

Memory

8GB for standard systems

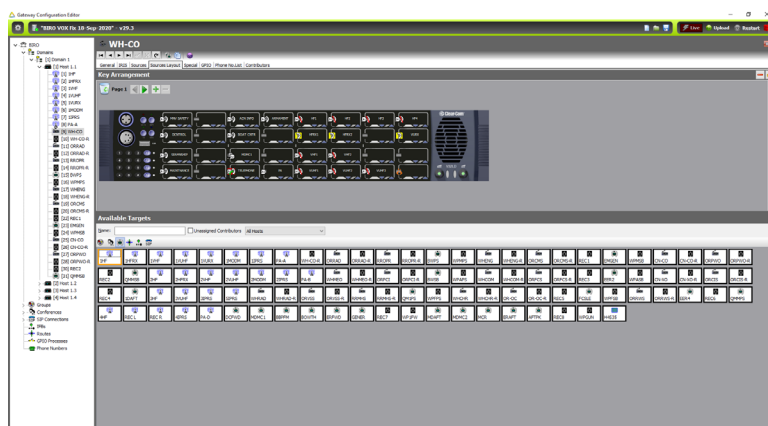
16MB for large networked systems and servers

CPU

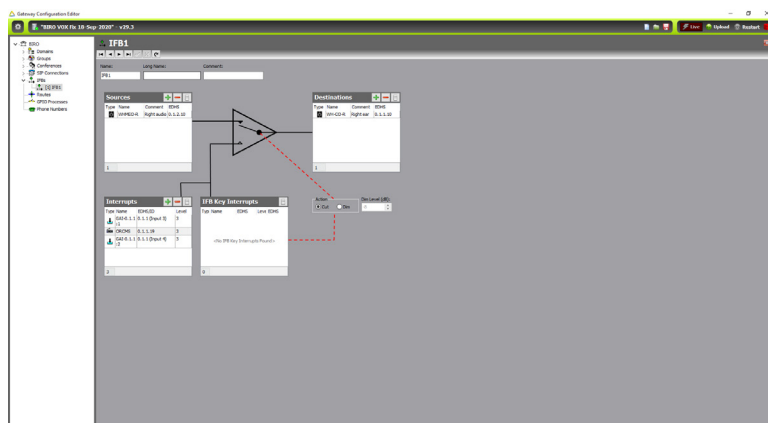
Intel i5 10th generation or equivalent

GPU

Dedicated GPU for large network systems



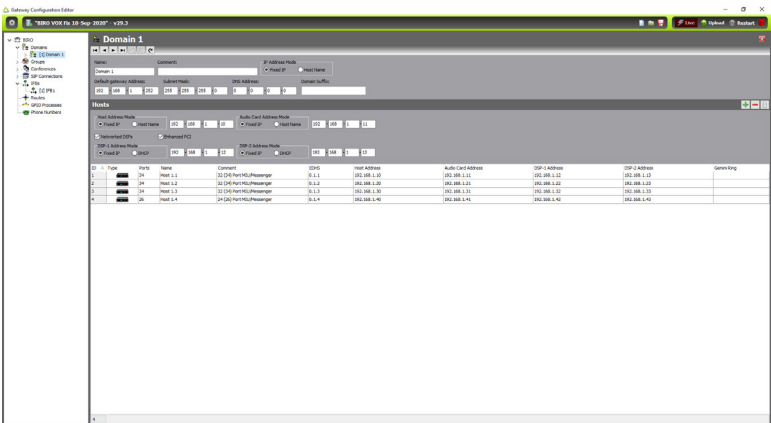
Gateway-Panel Configuration



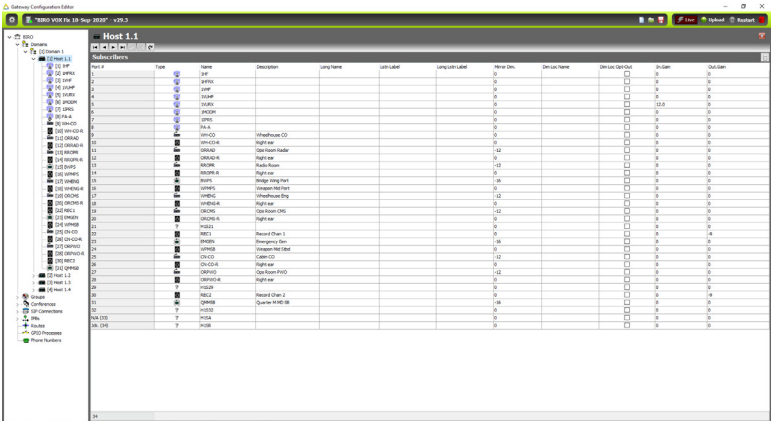
Gateway-IFB configuration



Gateway- Host Configuration



Gateway-Hosts Overview



Gateway-Subscribers Overview