



# Eclipse<sup>®</sup>HX Quick Start Guide

This quick start guide describes how to set up a basic Eclipse<sup>®</sup> HX digital matrix system. It explains how to:

- Connect interface cards, user panels and other devices to the matrices.
- Check that your connected hardware devices are functioning correctly (without having to configure the matrices).
- Set up the EHX configuration software on the PC.
- Set up and configure the matrix.

**Tip:** For detailed help with setting up and configuring your Eclipse HX system, see the full **Eclipse HX documentation set** on the Eclipse HX DVD(s).

## 1.1 Connecting your Eclipse HX devices

To connect your Eclipse HX devices to the matrix:

1. Ensure that the Eclipse HX matrix is unpowered.
2. Check that all the required interface cards (MVX-A16, E-QUE, E-MADI64, IVC-32, LMC-64 and E-FIB front and rear cards) and interface modules (in the case of the Eclipse HX-Median and Eclipse HX-Delta) have been inserted into the matrix.
3. Connect the rear cards to the user panels, then the interface modules, leaving unused ports until last.
4. Connect the matrix to your network (see next section).
5. Power up the Eclipse HX matrix.

## 1.2 Connecting the EHX PC

The Eclipse HX matrix is set up to automatically obtain an IP address from a DHCP server on your network. If no DHCP server can be located, the matrix defaults to the IP address of 169.254.0.100. This enables the PC that will host your EHX configuration software to automatically acquire an IP address to communicate with the matrix through a directly connected Ethernet cable.

**Note:**

*If you are using an older PC you may require an Ethernet crossover cable. If the Ethernet port status and activity LEDs are **not** lit when the PC and matrix are powered and the cable is connected, the cable is probably of the incorrect type.*

You can connect the matrix by either connecting the frame to a network with a DHCP server or by connecting directly to the matrix LAN port (1) with a single cable.

## 1.3 Checking connected hardware devices

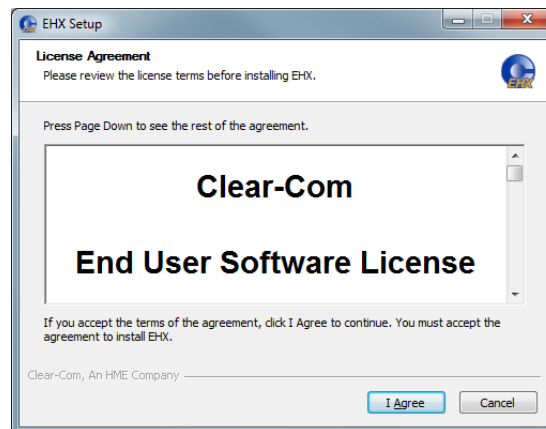
The matrix is delivered with an embedded, factory-set configuration that allows you to verify the correct functioning of the MVX cards, associated analog connected panels and CPU cards.

Connect any panels into the MVX-A16 card ports and power the panel(s) (if you have not done so already). To help you check that the panels are functioning, a **Talk** key is provided to itself on each panel. A **Talk** and **Listen** key are also provided to a partyline (conference / loop) label, PL001.

## 1.4 Installing the EHX configuration software

The EHX configuration software is located on the Eclipse HX software DVD. Separate EHX client and server installs are provided. Click the relevant install file to run, and follow the EHX Setup wizard instructions.

**When the installation is complete, run the EHX software.**



**Figure 1: EHX Setup, Software License screen**

### Note:

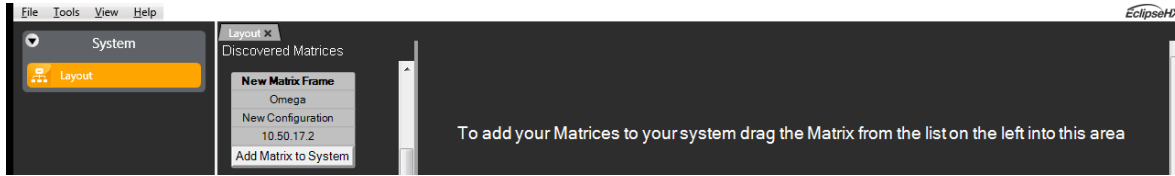
*Only select the server installation if you want to run EHX in Client-Server mode, where multiple clients are connected to a shared central configuration server.*

## 1.5 Discovering the matrix in EHX

To discover the matrix (and associated cards and ports) in EHX:

1. Connect your EHX PC to the same LAN / WAN (see above) that your matrix is also connected to.
2. Run EHX. You will be prompted to create a new EHX project. A project holds the configurations that can be applied to one or more matrices.

3. If your matrix is not yet powered, **power it now**. Your matrix will now be seen on the Layout screen, in the discovery pane.



**Figure 2: EHX > Discovered Matrices**

4. Drag the matrix to the canvas.
5. Bring this matrix into your project (**save** the project).
6. Discover the cards in your matrix.
7. Discover the analog panels and interfaces attached to your MVX cards.

You now have a base configuration where you can name your ports, assign keys to user panels, and configure partylines, Fixed Groups and other intercom functions.

## 1.6 Configuring the Matrix

### 1.6.1 IP address

The Eclipse HX matrix is set to automatically acquire an IP address from the network (see above). However, Clear-Com strongly recommends that you set a static IP address before commencing normal operations to prevent:

- Delays in restarting the matrix while a new IP address is required.
- Possible undesirable shifts in the IP address during operation.

To set a static IP address on the matrix:

1. In EHX, right click the matrix on the **Layout** screen.
2. Select **Change IP Address**. The current IP settings are displayed.
3. Make any desired adjustments to the IP settings (you may need to contact your IT department for assistance).
4. Apply the changes to the matrix (click **Apply Changes**).

### 1.6.2 Applying a configuration

The matrix is initially shown in the **amber** state in EHX. This color coding indicates that a live configuration of the project for this matrix must be applied to the matrix.

To apply a configuration to all the matrices in the system, click **Apply Changes to System**. To apply a configuration to a particular matrix, click **Apply Changes**.

In the **Apply to System** dialog, select a reset type and then click **Apply to System**.

**Tip:** You can modify the name and/or description of the configuration on the matrix, using **Configuration Manager**.

When the configuration has downloaded, the matrix resets. When the matrix reset is complete it reappears on the network and is displayed as **green** on the Layout screen (your matrix is now configured from this project).

### 1.6.3 Configuring functionality

The sidebar EHX menus list the configuration options that are available to you, according to the interface cards and user panels associated with the discovered matrix. EHX highlights mandatory configuration steps that have yet to be performed (based on your hardware) in **amber**. To find out what the step is, hover the mouse over the amber colored menu option. A tooltip is displayed.



**Figure 3: EHX tooltip, missing mandatory step**

If you have multiple matrices in your system a summary total of these indications is given on any unselected matrix in the sidebar.

**Tip:** Any changes that you make can be applied to the particular matrix by clicking **Apply Changes** in the EHX sidebar.

## 1.7 Document Reference

*Eclipse HX Quick Start Guide. Product Number: 399G158 Revision: A. 12 May 2015  
Copyright © 2015 HME Clear-Com Ltd. All rights reserved.*